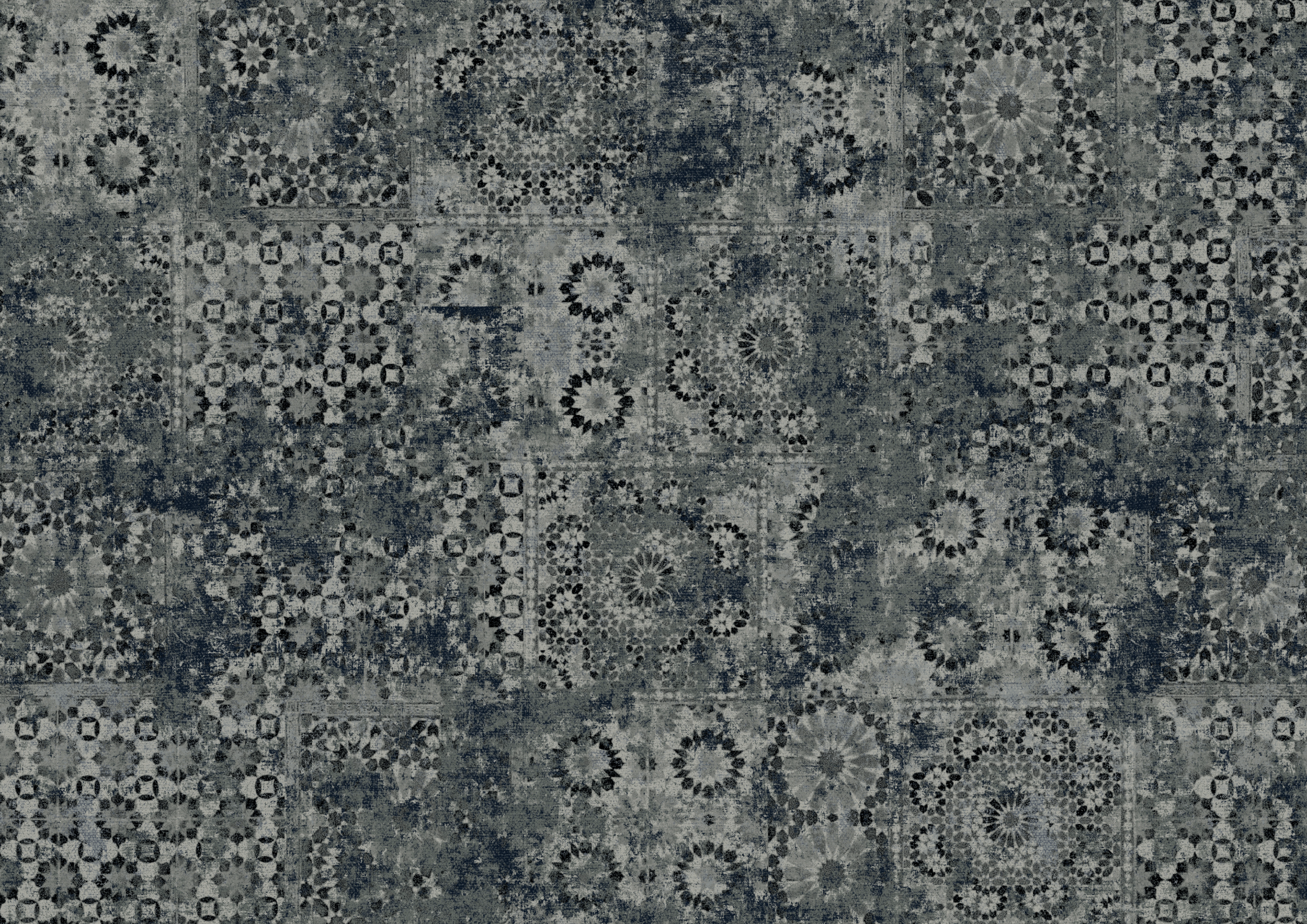




# Signature Collections





What if you could give a space a unique character? Individuality in the form of carpet. Tapibel introduces **the Signature Collections**: three exclusive high-end carpet collections combining unique patterns and design. They are produced using sustainable **ECONYL® yarn** and available as carpet tiles and wall-to-wall carpet.

Choose from **Signature Origin, Signature Prestige, and Signature Art**: three collections with a unique story.





# Choose a unique character for your space

The **sophisticated patterns** on the carpet give any interior a unique look.  
Put your own stamp on the floor.

Each collection consists of fifteen designs, each available in four stylish colours.

## 01

### Choose your design

Which pattern fits your project perfectly?  
Will it be the mysterious Echoes, the  
elegant Marble, or the opulent Baroque?  
The choice is yours.

## 02

### Choose your colour

Time to show your true colours. Match the  
right shade with the mood of your room:  
warm rusty-brown, soft camel, modern  
stone grey, or deep dark blue.

## 03

### Choose your quality

Then you decide the level of quality in  
which you want to make your mark. Will you  
opt for a softer cut pile or a more robust  
loop pile?

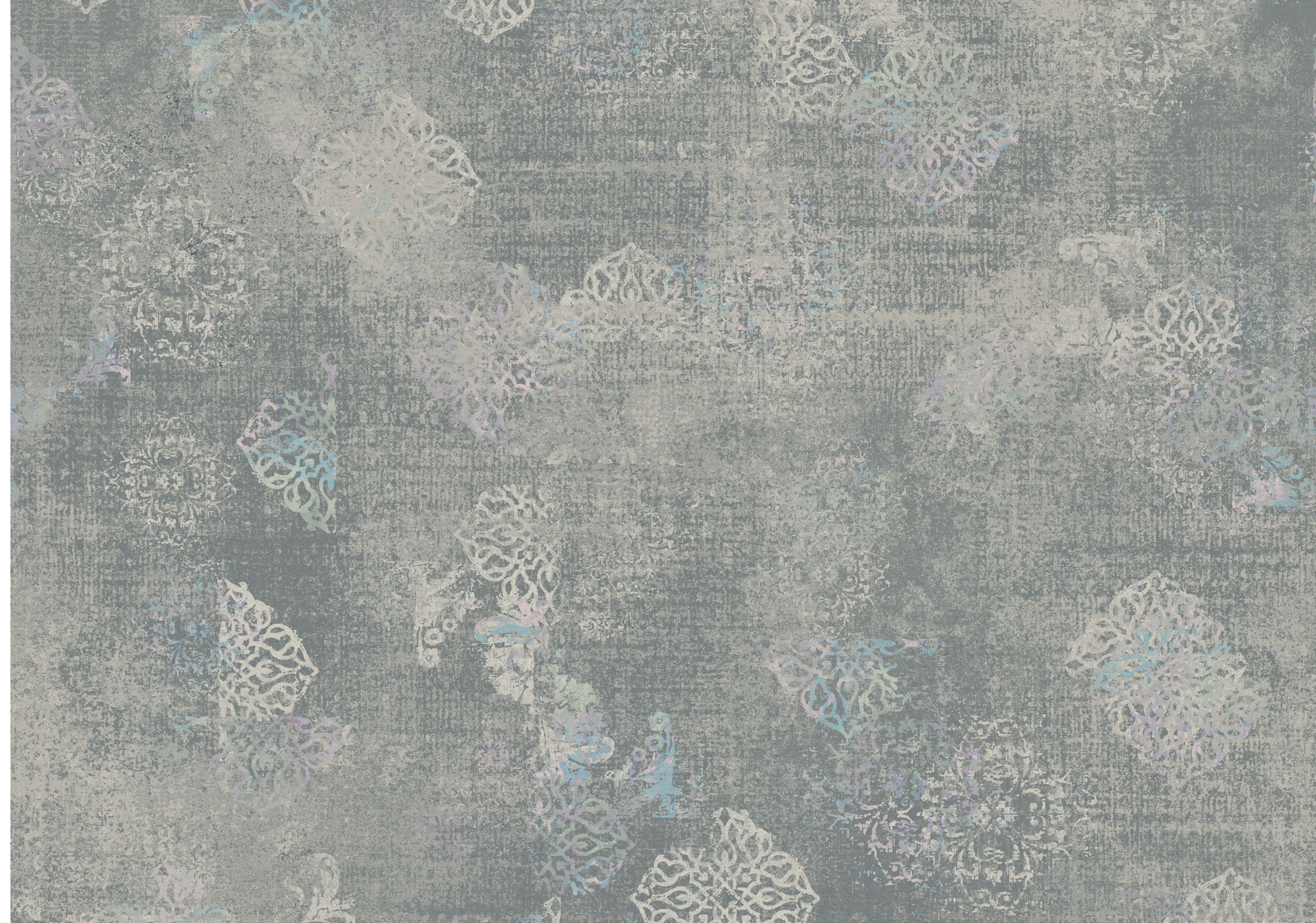


# Signature Origin

**Signature Origin** is the first collection from the Signature family. From a marble look to geometric circles, this cut pile quality brings luxurious designs to life on the floor. Go for a continuous floor design in a single pattern or combine different drawings and colours for a personalised tile mosaic.

Signature Origin is particularly well suited to the hospitality sector, such as in lobbies, hotel rooms, corridors, and reception areas. It looks wonderful in commercial or residential interior projects as well. What makes this collection so unique? The wide range of designs as well as colours.

Make your mark on your floor with a choice of fifteen designs, each available in four different colours.







# Signature Prestige

**Signature Prestige** is the second collection in the family. This cut pile quality has a higher pile weight than Origin (1200 g/m<sup>2</sup> vs 900 g/m<sup>2</sup>), giving the collection an even more luxurious feel. Go for a sleek, continuous look in a single pattern or combine different drawings and colours for a personalised tile mosaic.

Signature Prestige shines in the hospitality sector where foot comfort is essential, such as in lobbies, hotel rooms, corridors, and reception areas. It is also a beautiful signature in commercial or residential interior projects.

Make your mark on your floor with a choice of fifteen designs, each available in four different colours.



# Signature Art

**Signature Art** is the third collection from the Signature Collections. The loop pile creates a solid, textured look that brings high-end designs to life on the floor. Go for a continuous floor design in a single pattern or combine different drawings and colours for a personalised tile mosaic.

Signature Art is ideal for lobbies, hotel rooms, corridors, and reception areas. It is also a beautiful signature in commercial or residential interior projects.

Make your mark on your floor with a choice of fifteen designs, each available in four different colours.







These flatshots were taken  
at a perspective of 100 x 100 cm

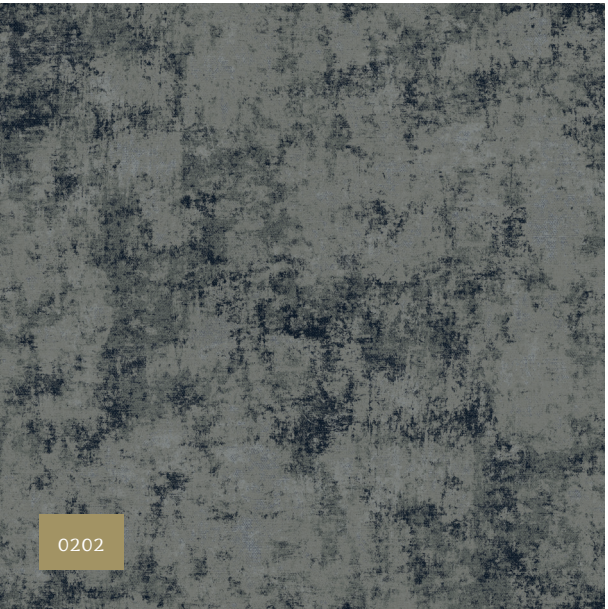
# Organic Code



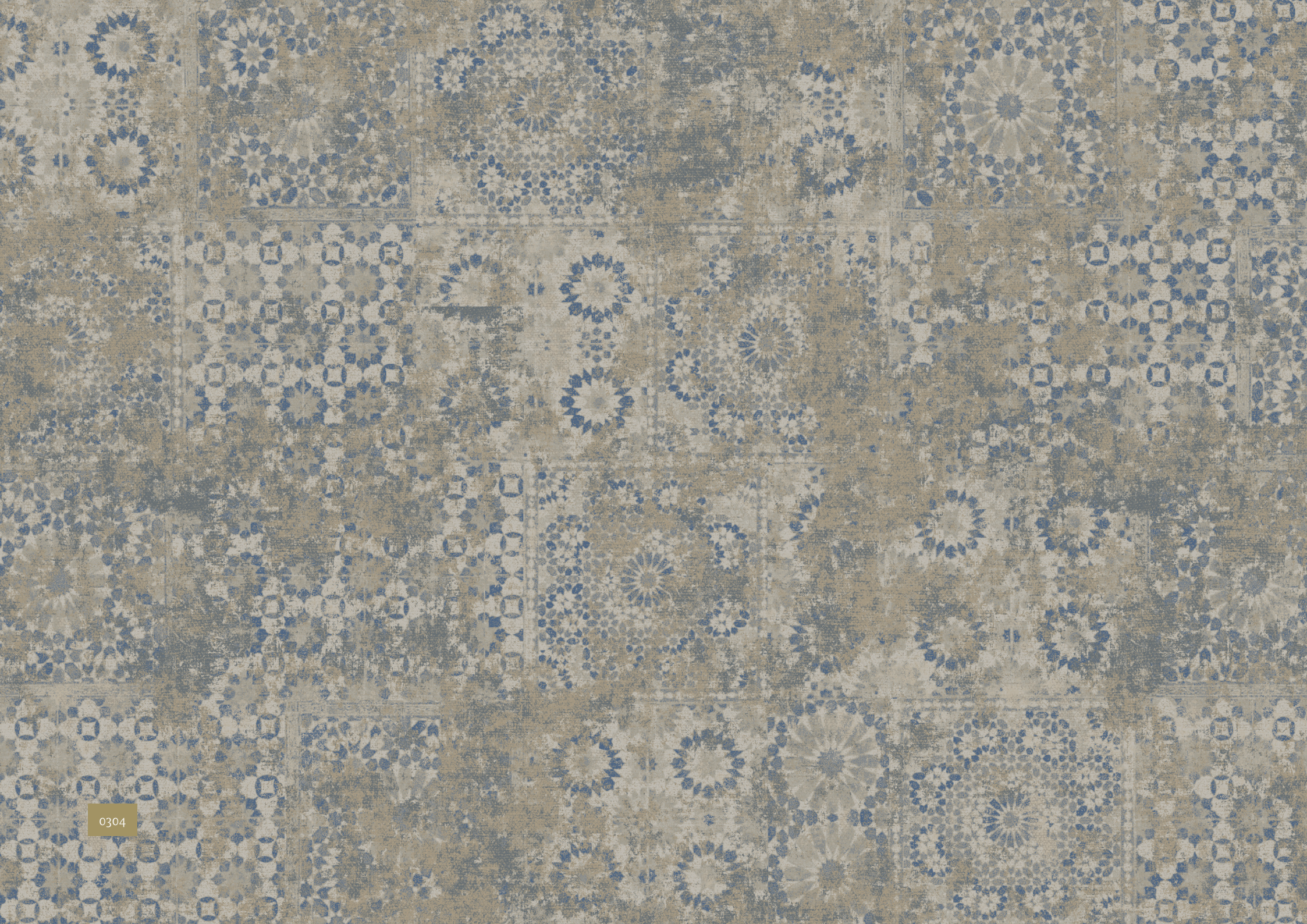


These flatshots were taken  
at a perspective of 100 x 100 cm

# Marble Echoes







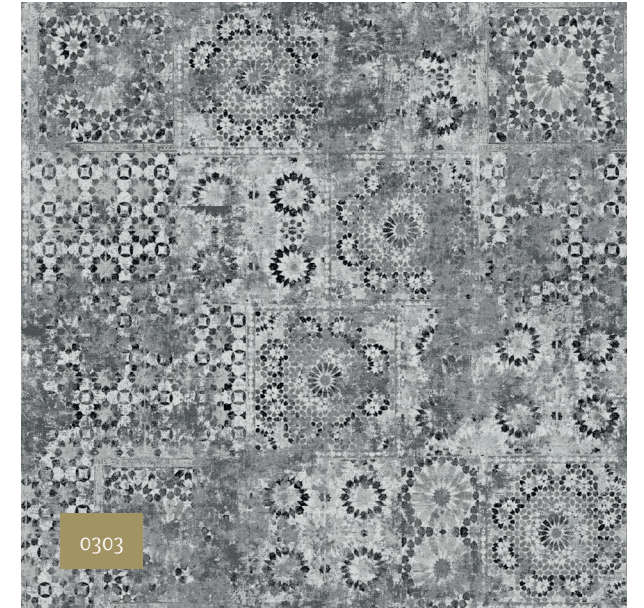
0304

These flatshots were taken  
at a perspective of 100 x 100 cm

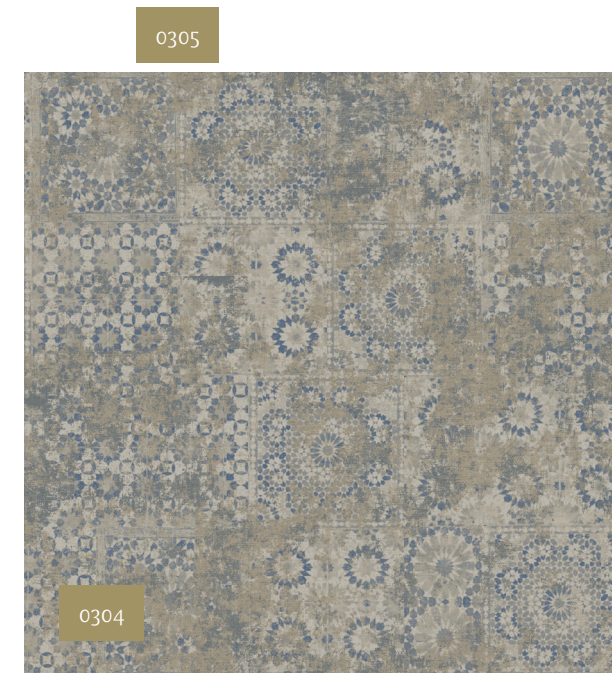
# Baroque Bloom



0302



0303

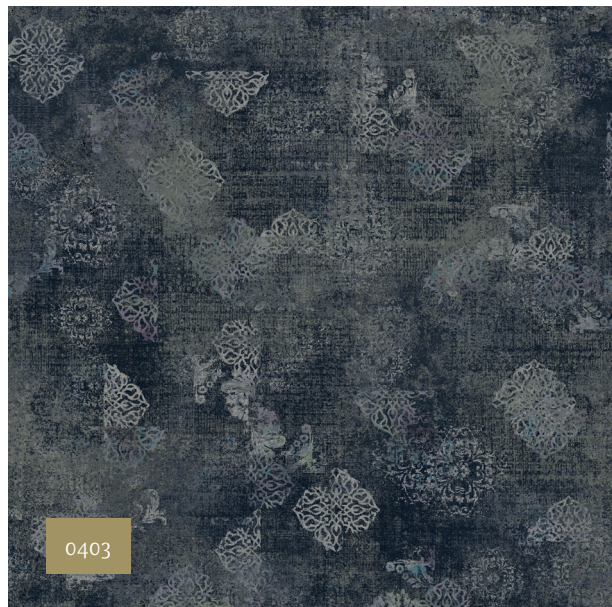


0304



0305





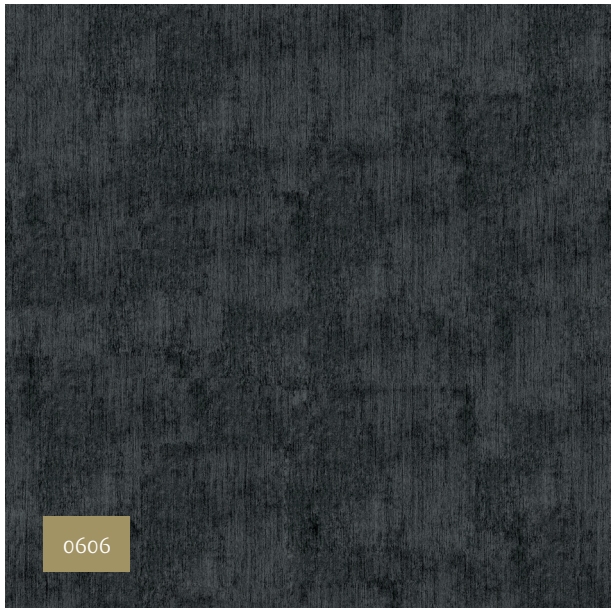
These flatshots were taken  
at a perspective of 100 x 100 cm



Loom  
**Lace**



These flatshots were taken  
at a perspective of 100 x 100 cm



# Geometric Grainline





These flatshots were taken  
at a perspective of 100 x 100 cm

# Mosaic Gridline

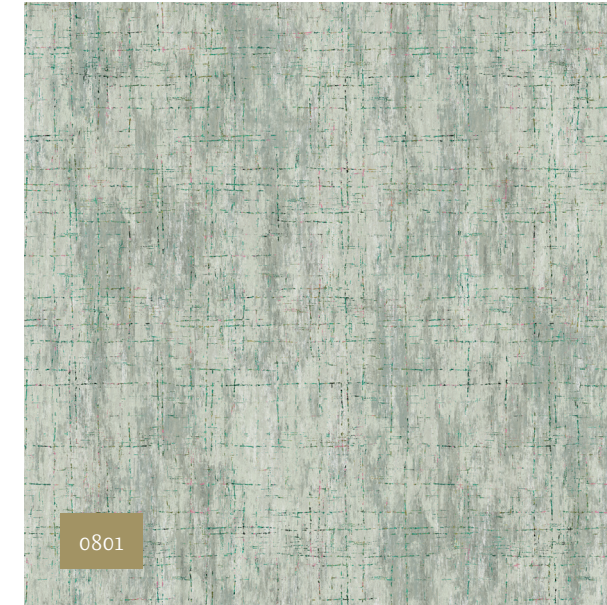




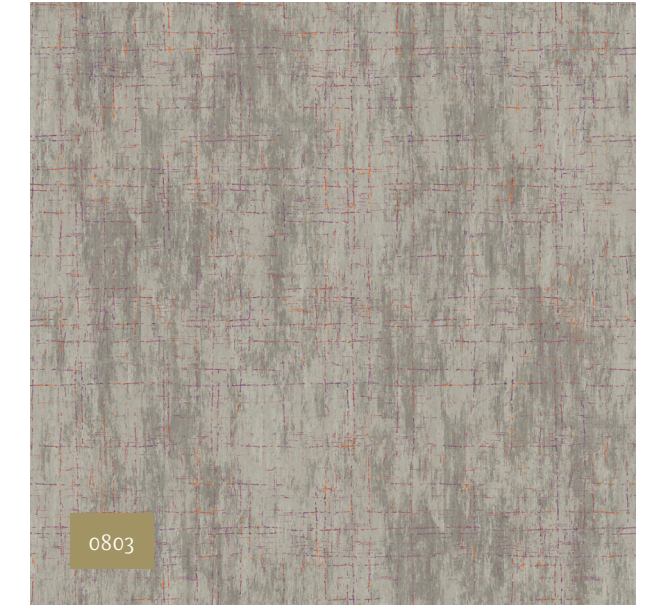
o801

These flatshots were taken  
at a perspective of 100 x 100 cm

# Fresco Canvas



o801



o803



o804



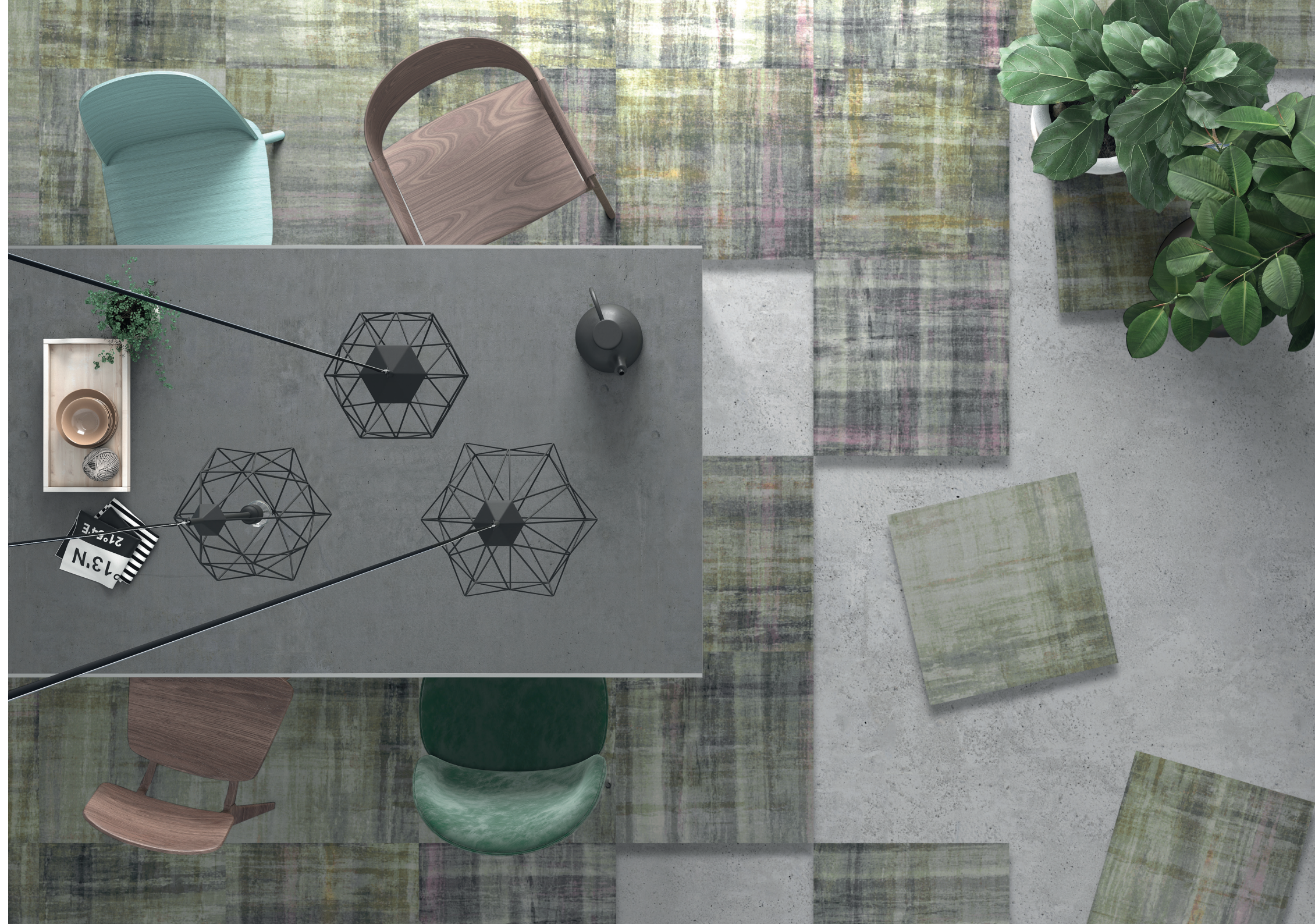
o805





These flatshots were taken  
at a perspective of 100 x 100 cm

# Deco Weave





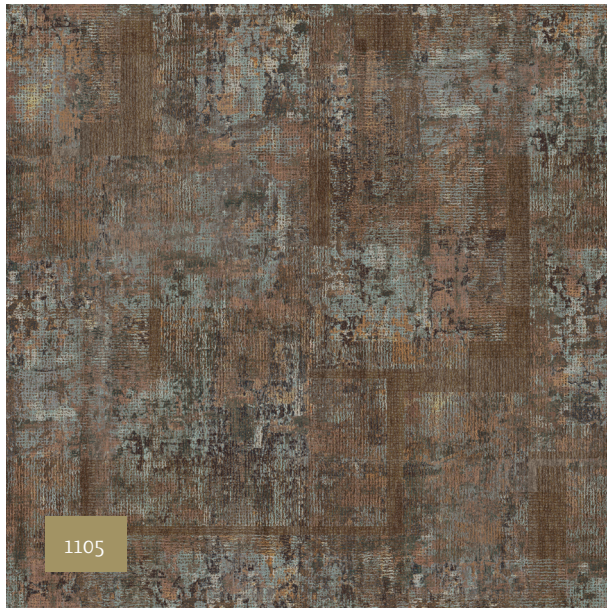


These flatshots were taken  
at a perspective of 100 x 100 cm



# Offset Art

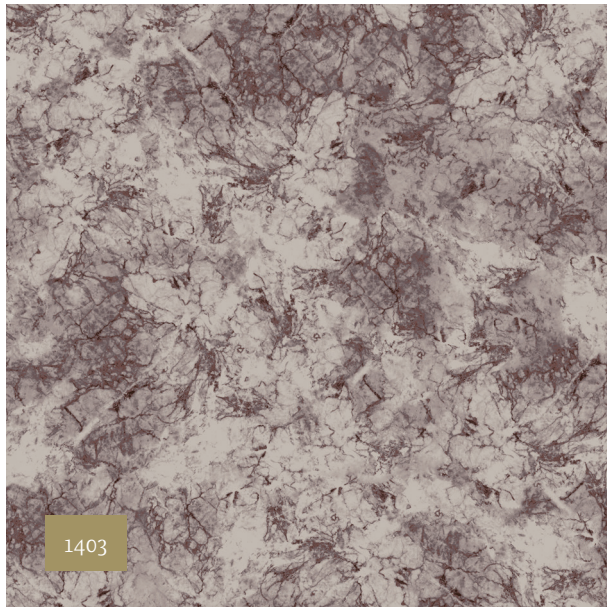
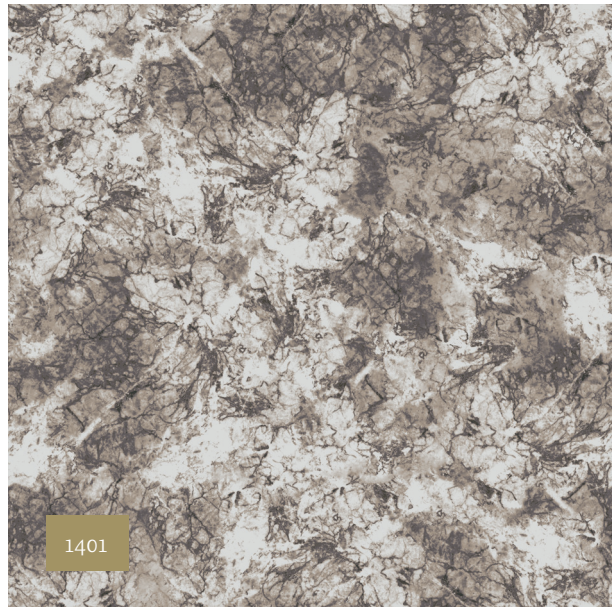




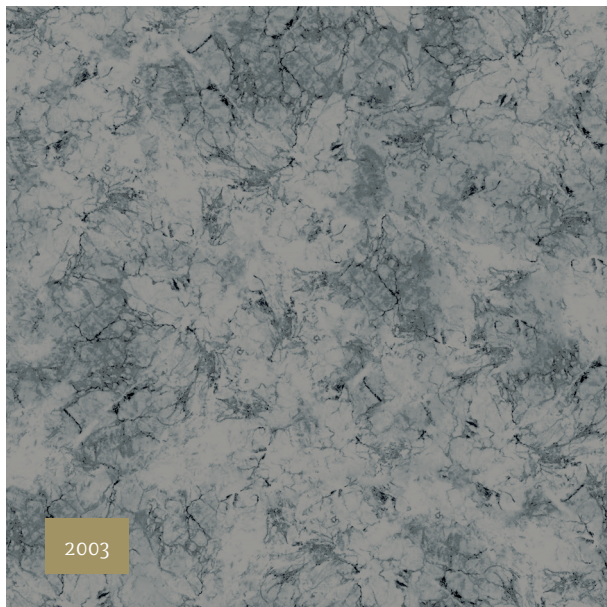
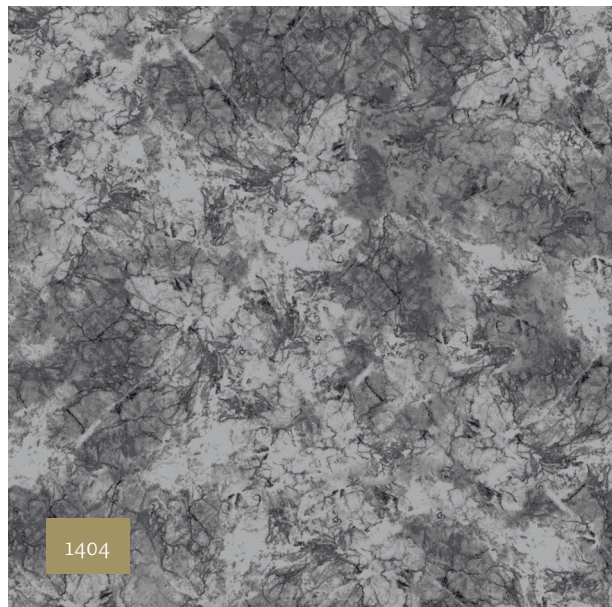
These flatshots were taken  
at a perspective of 100 x 100 cm

# Structured Fade





These flatshots were taken  
at a perspective of 100 x 100 cm



# Improv Patina



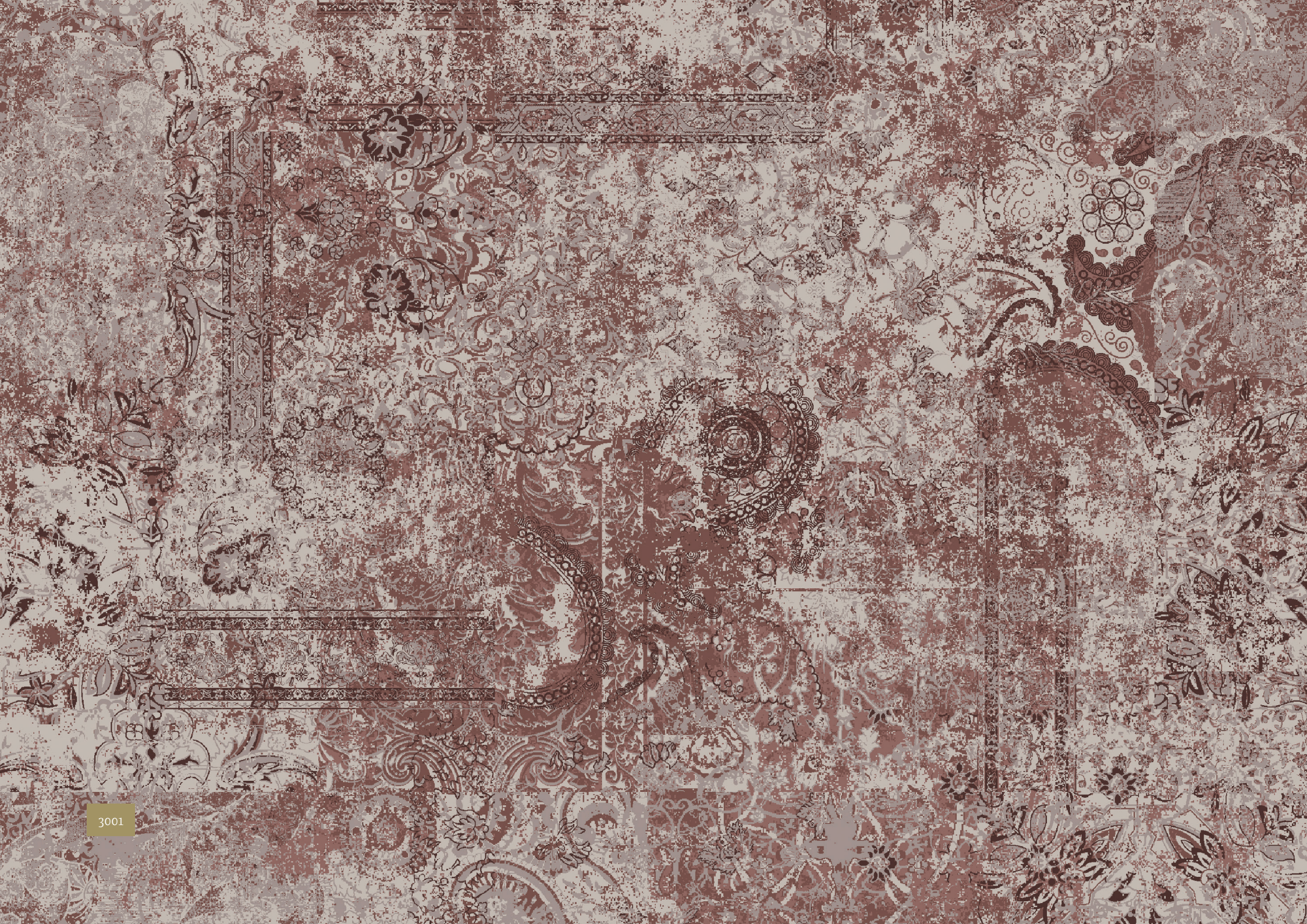


These flatshots were taken  
at a perspective of 100 x 100 cm

# Modern Etch







3001

These flatshots were taken  
at a perspective of 100 x 100 cm

# Arabesque Aura



3001



3002

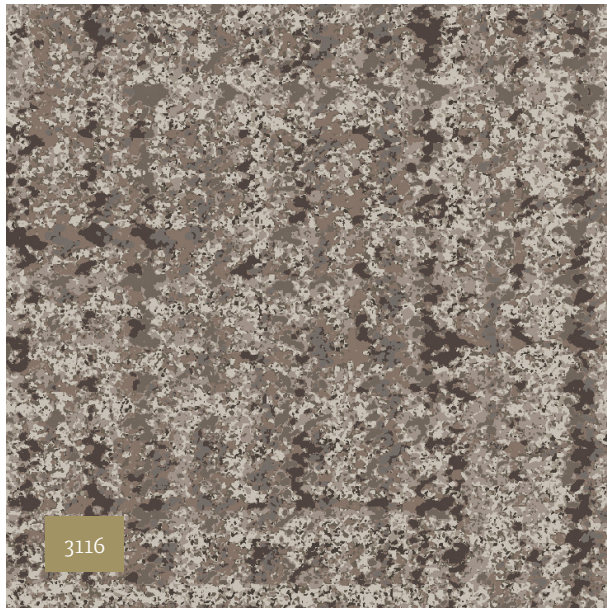
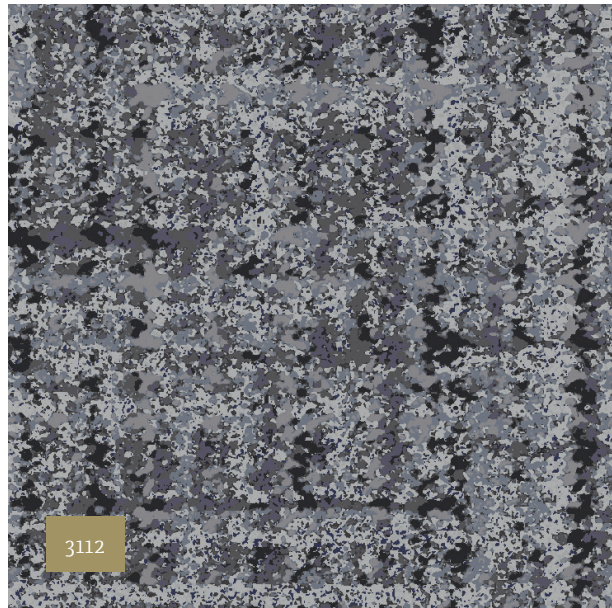


3003



3006





These flatshots were taken  
at a perspective of 100 x 100 cm

# Tranquil Tweed





3210



3211



3212



3213

These flatshots were taken  
at a perspective of 100 x 100 cm

# Desert Mirage



3213





**Did you know that ECONYL®  
emits 90% less CO<sub>2</sub> during  
production?**

# Sustainable design with **ECONYL®**

The Signature Collections align perfectly with our sustainability vision. After all, Tapibel wants to make both the planet and carpet production more ecologically sound. We achieve this with our own sustainability brand called Twise.

Twise because Tapibel supports smart carpet production for a greener planet. What's more, it means we do our part to contribute to a circular economy and reduce waste. All our solutions contain regenerated or recycled material. This way, we give used materials a second (and third, fourth, etc.) life!

Twise includes ECONYL®, a yarn made from reclaimed nylon that we use in our Signature Collections.



# Ecofuse

## The adhesive



Ecofuse is our **ecological alternative to the traditional latex adhesive** compound in wall-to-wall carpet, carpet tiles and rugs. We replace the latex with a sustainable, post-consumer product called PVB (PolyVinyl Butyral), extracted from used car windows and laminated building glass.

### The benefits



of sustainable origin



non-toxic



future-proof



The switch to PVB results  
in a latex reduction of  
**500 tonnes!**



Scan the QR code  
and discover the PVB  
production process!

## Ecofuse in our carpets

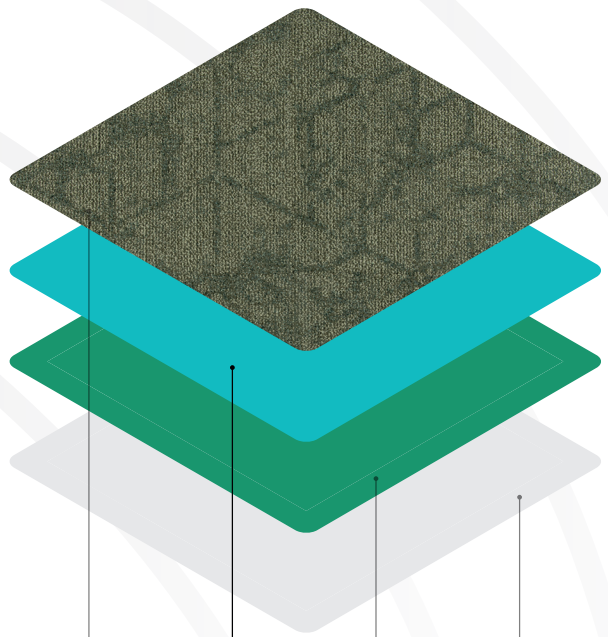
At Tapibel, we use Ecofuse in many of our carpets. Both in wall-to-wall, in carpet tile and rug.

### Precoat

The first adhesive layer between yarn and primary backing to ensure that the yarns bond firmly.

### Secondary backing

A second adhesive layer is applied to glue the action or felt backing onto the actual carpet. This final process ensures that the wall-to-wall carpet obtains more body and rigidity.



1  
Yarn

2  
Precoat  
Ecofuse



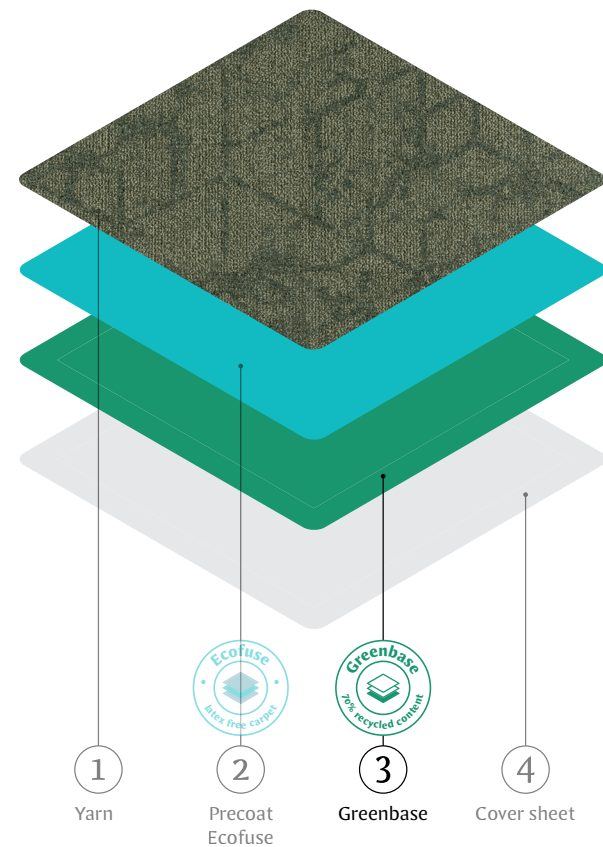
3  
Greenbase

4  
Cover sheet



# Greenbase

The modified bitumen backing



Greenbase, short for modified bitumen, is a more sustainable solution for carpet tile backing. It consists of **70% recycled materials** (diverted from a waste stream of limestone mining) which makes it less harmful to the planet. Greenbase guarantees both dimensional stability and strength in the final product.

70%  
recycled  
materials





# EPD- certified

We hold an **Environmental Product Declaration (EPD)** for our ECONYL® Signature Collections. The product declaration transparently maps the ecological footprint of the carpet. The EPD certificate underlines Tapibel's commitment to sustainability and shows that design and environmental awareness go hand in hand. Not just empty words but concrete initiatives with demonstrable impact.





Technical details carpet tiles									
Collection	Manufacturing type	Construction	Pile composition	Dye method	Primary backing	Secondary backing	Pile weight	Total weight	Pile height
Origin	tufted 1/10"	Cut pile - Saxony	100% PA - ECONYL®	Digital print	non-woven	GREENBASE modified bitumen	900 (+/-) g/m²	4.400 (+/-) g/m²	5,0 (+/-) mm
Prestige	tufted 1/10"	Cut pile - Saxony	100% PA - ECONYL®	Digital print	non-woven	GREENBASE modified bitumen	1.200 (+/-) g/m²	4.700 (+/-) g/m²	6,0 (+/-) mm
Art	tufted 1/10"	Structured loop pile	100% PA - ECONYL®	Digital print	non-woven	GREENBASE modified bitumen	780 (+/-) g/m²	4.400 (+/-) g/m²	5,0 (+/-) mm

Technical details wall-to-wall carpet									
Collection	Manufacturing type	Construction	Pile composition	Dye method	Primary backing	Secondary backing	Pile weight	Total weight	Pile height
Origin	tufted 1/10"	Cut pile - Saxony	100% PA - ECONYL®	Digital print	non-woven	Action backing	900 (+/-) g/m²	2.000 (+/-) g/m²	5,0 (+/-) mm
Prestige	tufted 1/10"	Cut pile - Saxony	100% PA - ECONYL®	Digital print	non-woven	Action backing	1.200 (+/-) g/m²	2.300 (+/-) g/m²	6,0 (+/-) mm
Art	tufted 1/10"	Structured loop pile	100% PA - ECONYL®	Digital print	non-woven	Action backing	780 (+/-) g/m²	2.050 (+/-) g/m²	5,0 (+/-) mm

Total height	Tuft density	Size	Classification	Comfort rating	Fire resistance	Colourfastness light
6,5 (+/-) mm	198.750 /m²	50 x 50	33 heavy commercial	LC3	Bfl-S1 loose laid	7
8,5 (+/-) mm	213.000 /m²	50 x 50	33 heavy commercial	LC3	Bfl-S1 loose laid	7
6,5 (+/-) mm	175.000 /m²	50 x 50	33 heavy commercial	LC2	Bfl-S1 loose laid	7

Total height	Tuft density	Size	Classification	Comfort rating	Fire resistance	Colourfastness light
6,0 (+/-) mm	198.750 /m²	400 cm	33 heavy commercial	LC3	Cfl-S1 glued	7
8,0 (+/-) mm	213.000 /m²	400 cm	33 heavy commercial	LC5	Cfl-S1 glued	7
6,2 (+/-) mm	175.000 /m²	400 cm	33 heavy commercial	LC2	Cfl-S1 glued	7





**[www.tapibel.be](http://www.tapibel.be) – [sales@tapibel.be](mailto:sales@tapibel.be)**

Industrielaan 4 – Nolimpark 1319

B-3900 Pelt – Belgium

Tel.: +32 11 80 48 50

*Tapibel*