

Econyl Design Collections

Tapibel
Your carpet, our tradition

Sustainability & design go hand in hand

We know the world of carpet like the back of our hand and have been true carpet masters for over fifty years. **Sustainability and ecology** are of paramount importance to us. By **making our carpet production greener**, we are working towards a greener planet. For example, we use a **latex-free adhesive** in many of our collections. That way design and sustainability go hand in hand.

Discover our sustainability initiatives and get inspired by our latest, unique carpet designs with **ECONYL®**.



Twise: sustainable initiatives for a greener planet



Our carpets and our approach fit into today's world, as we are committed to ecology and sustainability. We are always looking for ways to make our carpets and carpet production more sustainable and ecological. We make this promise a reality with concrete **ecological solutions for a more sustainable modus operandi.**

Discover Twise, Tapibel's sustainability brand.

Why Twise?

1. Tapibel is "wise" to produce greener carpets.
2. All sustainable solutions contain recyclable material. We give it a second (and third, fourth, ...) life.

The result?

A more sustainable and ecological carpet, from the yarn to the backing.

As a family business, we also think of the next generations. Thanks to these adjustments, they too can enjoy a greener world and greener carpet.

Ecofuse

The adhesive



Ecofuse is our **ecological alternative to the traditional latex adhesive** compound in wall-to-wall carpet, carpet tiles and rugs. We replace the latex by a sustainable, post-consumer product called PVB (PolyVinyl Butyral), extracted from used car windows and laminated building glass.

The benefits



of sustainable origin



non-toxic



futureproof



The switch to PVB results
in a latex reduction of
500 tonnes!



Scan the QR code
and discover the PVB
production process!

Ecofuse in our carpets

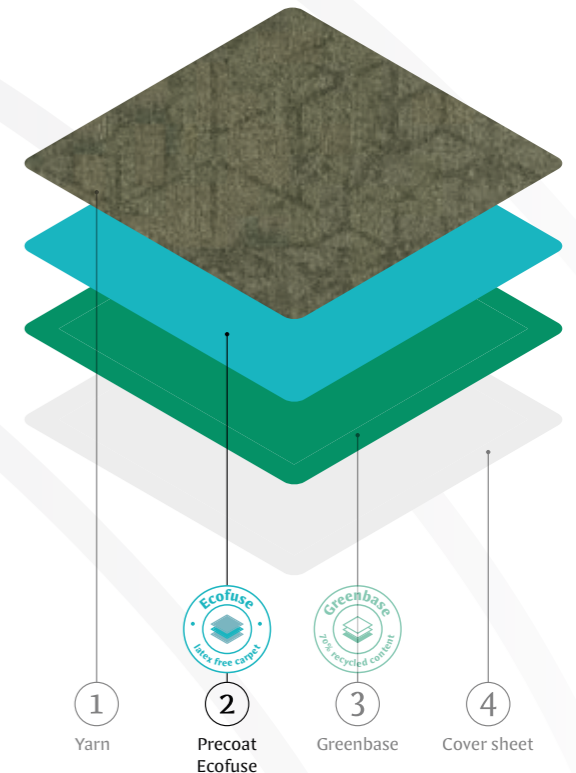
At Tapibel, we use Ecofuse in many of our carpets. Both in wall-to-wall, in carpet tile and rugs.

Precoat

The first adhesive layer between yarn and primary backing, to ensure that the yarns bond firmly.

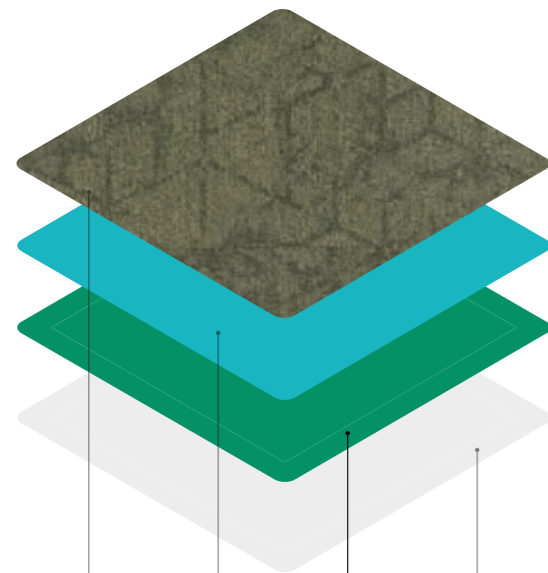
Secondary backing

A second adhesive layer is applied to glue the action or felt backing onto the actual carpet. This final process ensures that the wall-to-wall carpet obtains more body and rigidity.



Greenbase

The modified bitumen backing



1

Yarn

2

Precoat
Ecofuse

3

Greenbase

4

Cover sheet

Greenbase, short for modified bitumen, is a more sustainable solution for carpet tile backing. It consists of **70% recycled materials** (diverted from a waste stream of the limestone mining), which makes it less harmful to the planet. Greenbase guarantees both dimensional stability and strength in the final product.

70%
recycled
materials



ECONYL®

The yarns



The yarn of several of our collections are made of ECONYL®. The material is made of **100% of Nylon 6 waste**. ECONYL® has exactly the same properties as standard nylon with a more durable edge: it can be regenerated indefinitely without loss of quality.

By recycling the materials ECONYL® yarn contributes to a **circular economy**.



Currently, **25%** of **the yarns** we use in production are **ECONYL®**.



Compared to virgin materials, ECONYL®'s **CO₂ emissions** are reduced by **74%**.

The ECONYL® Regeneration System by Aquafil

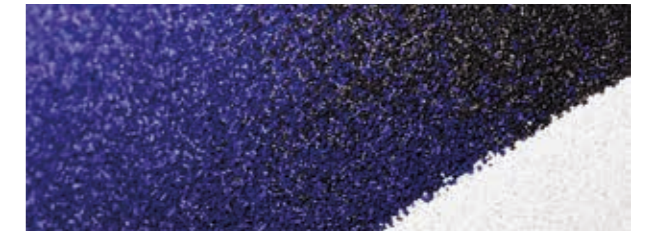


1. Rescue

Aquafil collects waste (fishing nets, dust scraps, old carpets, etc.). The materials are cleaned and sorted.

2. Regenerate

After a thorough regeneration and purification process, the nylon waste is returned to its original state.



3. Remake

ECONYL® regenerated nylon is processed into yarns.

4. Reimagine

With this new yarn, manufacturers such as Tapibel can get to work and create new carpet collections made with ECONYL®.





Measurable Environmental Impact with EPD

We reinforce our sustainability initiatives with **Environmental Product Declarations (EPD)**. These certificates underline our commitment to sustainability and prove that design and environmental awareness go hand in hand. No empty words, but concrete actions with real impact.

ECONYL® yarn is made from 100% regenerated nylon. This way, the carpet tiles contribute to a circular future with less waste and up to **90% lower CO₂ emissions** compared to standard PA6 nylon.

**Sustainable
Econyl
Design
Collections**





diamond pattern
concrete effect
versatile

Diamond art

The brand new Diamond Art collection is part of our ecological modular design concept. Diamond Art combines a **geometric design with a sleek concrete effect** that draws your eye to the floor. The trendy pastel colour bank gives every modern interior a tough and innovative look, both in hotels, offices and in public spaces.

Our inspiration

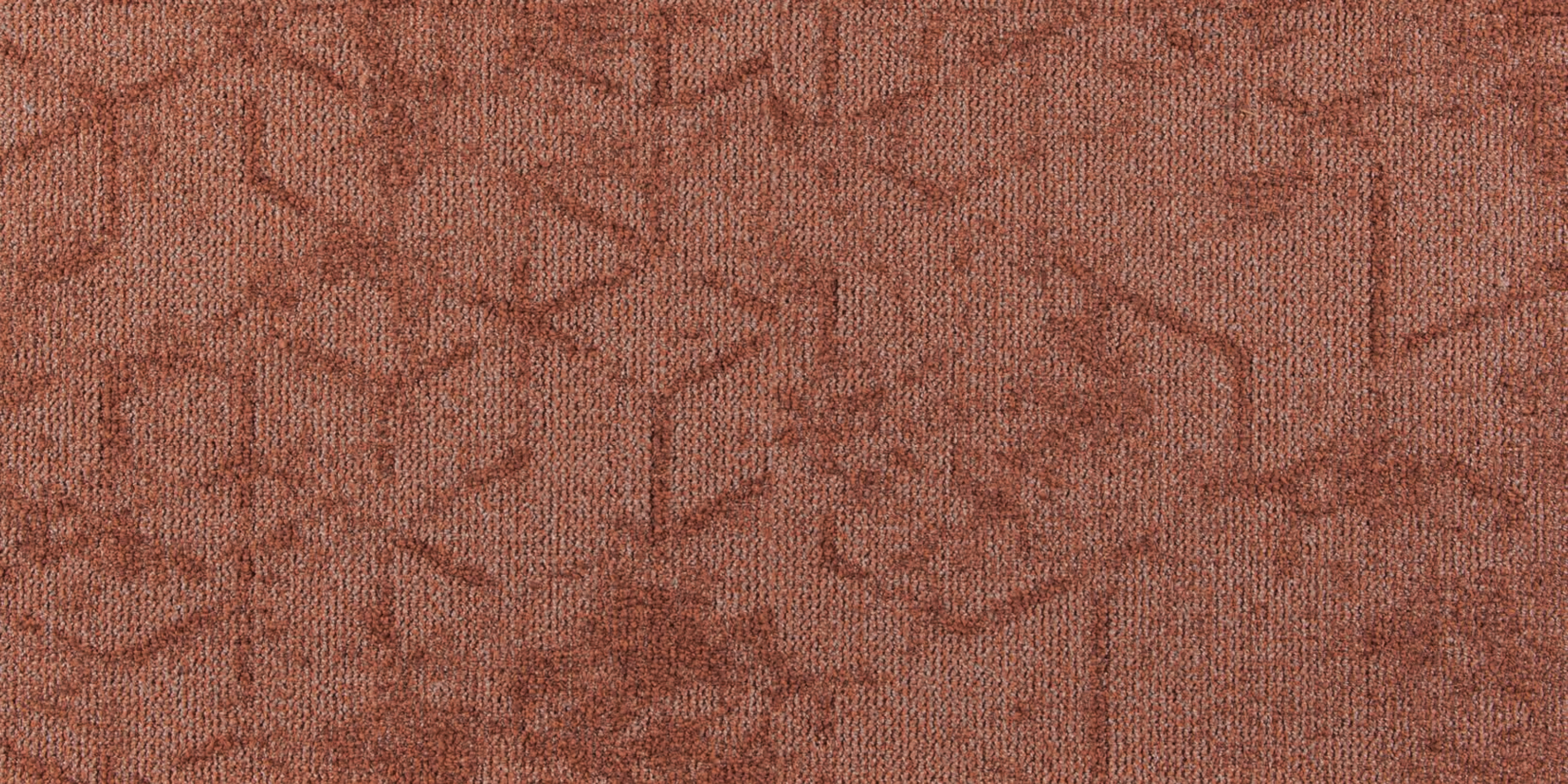
The green theme colour reinforces **the connection with nature** in commercial environments. It increases the **importance of ecological thinking** and sustainability in soft floor coverings. Additional properties are better acoustics, extra insulation and exquisite underfoot comfort.

DiamondArt products allow interior designers to design creative floors and incorporate countless colour combinations into the end customer's interior.

The collection is available in 12 different colours. Choose a neutral colour to integrate the carpet in a striking design or let the carpet speak for itself with an eye-catching shade. How about soft green to bring nature indoors?

Available in wall-to-wall carpet (4 m) and carpet tiles (50x50 cm). XL tiles (50x100 cm and 100x100 cm) are optional from 200 m².





Nature calling



Pantone
15-0343 TCX
Greenery



Diamond Art 64670









expressive
natural
paintbrush pattern

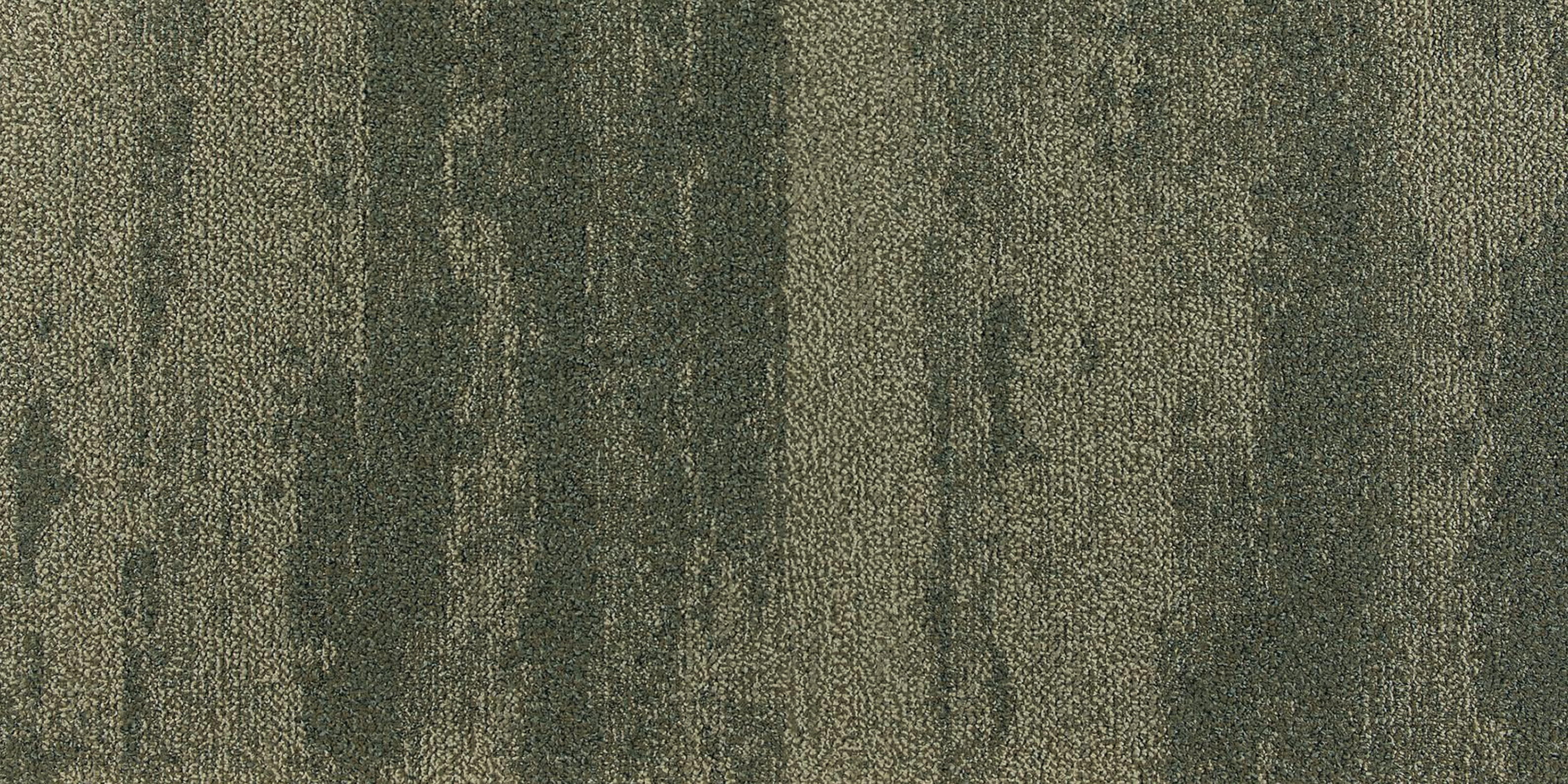
Shoreline

Shoreline is a **bold and expressive design**. The ship's wood or paintbrush pattern catches the eye and won't let you go. The markings on the carpet create an interesting flooring concept in any office or hospitality environment.

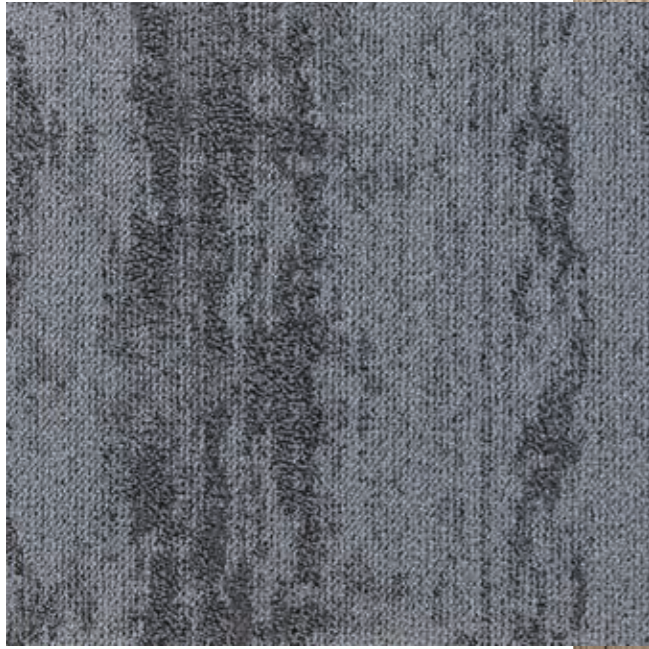
Choose warm, natural shades to add cosiness to any space. Or go for a fresh, colourful colour to make a statement.

Available in wall-to-wall carpet (4 m) and carpet tiles (50x50 cm). XL tiles (50x100 cm and 100x100 cm) are optional from 200 m².





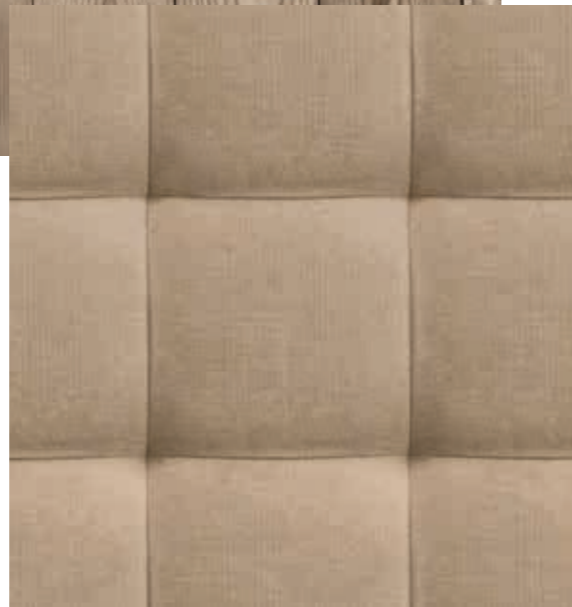
Picturesque seaside



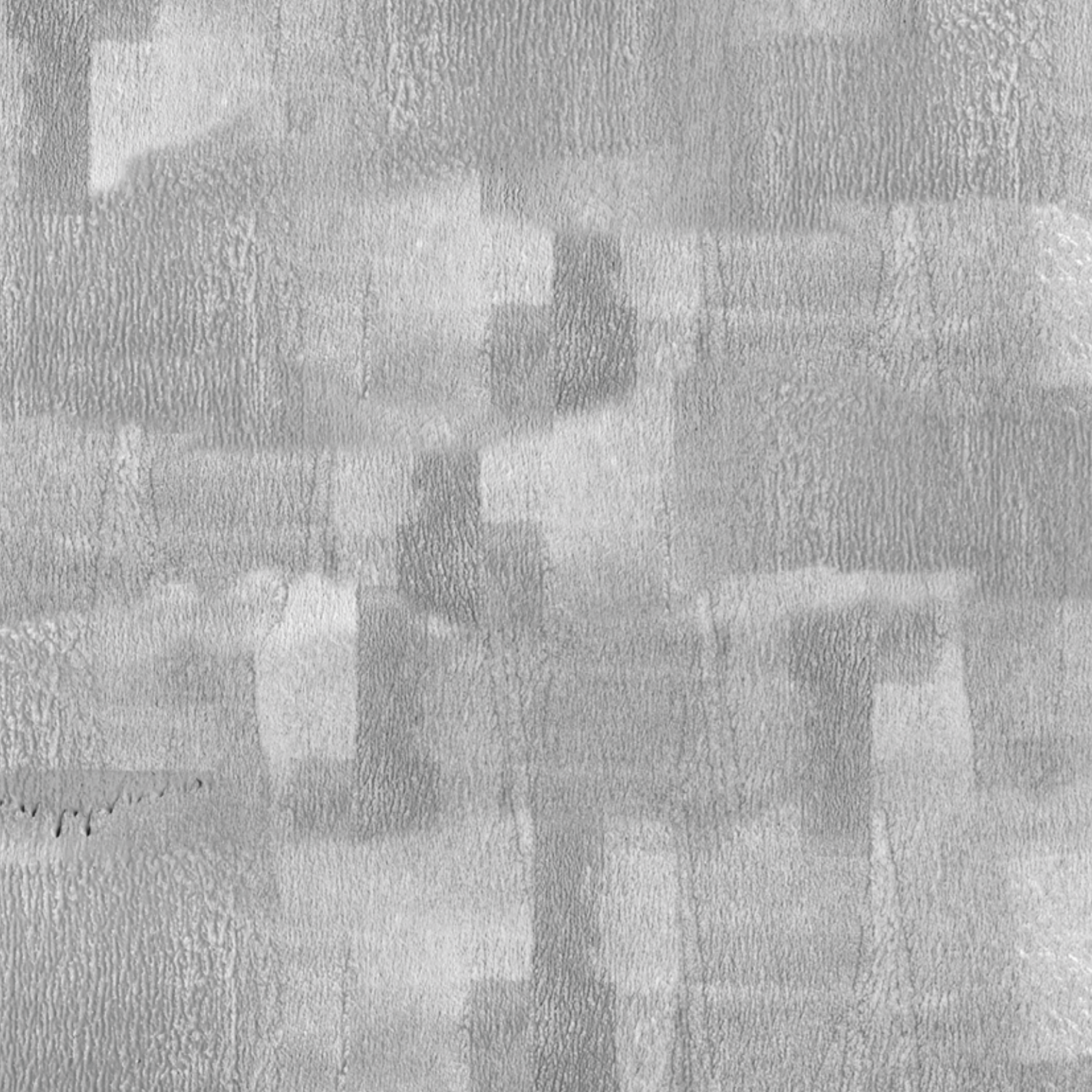
Shoreline 65042



Pantone
14-1315
Hazelnut







**original
random pattern
tough**

Urban Textures

Urban Textures has **a special crisscross pattern** that can be used in any direction. The pattern creates the illusion of texture on the floor. The collection makes a statement in both hospitality settings and office spaces. Colour outside the lines with the sturdy design of Urban Textures.

Available in wall-to-wall carpet (4 m) and carpet tiles (50x50 cm). XL tiles (50x100 cm and 100x100 cm) are optional from 200 m².

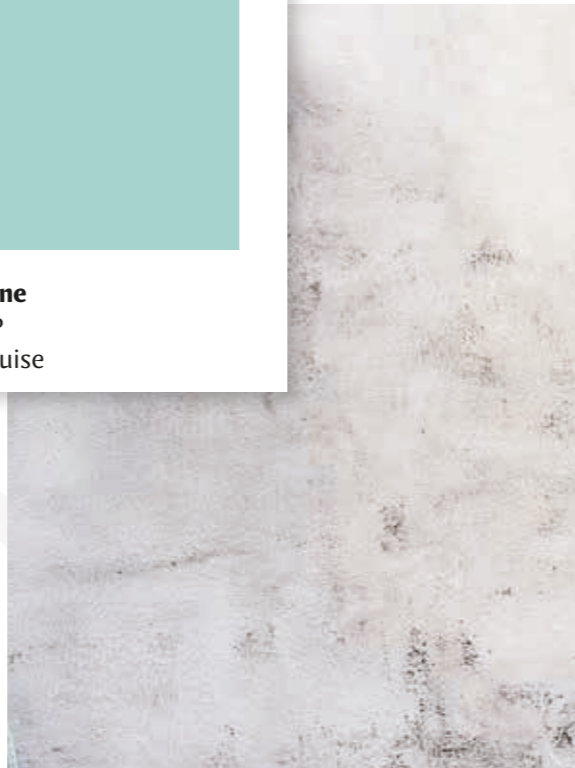




Gritty blueprint



Pantone
318 CP
Turquoise



Urban Textures 64942







minimalist
timeless
tweed pattern

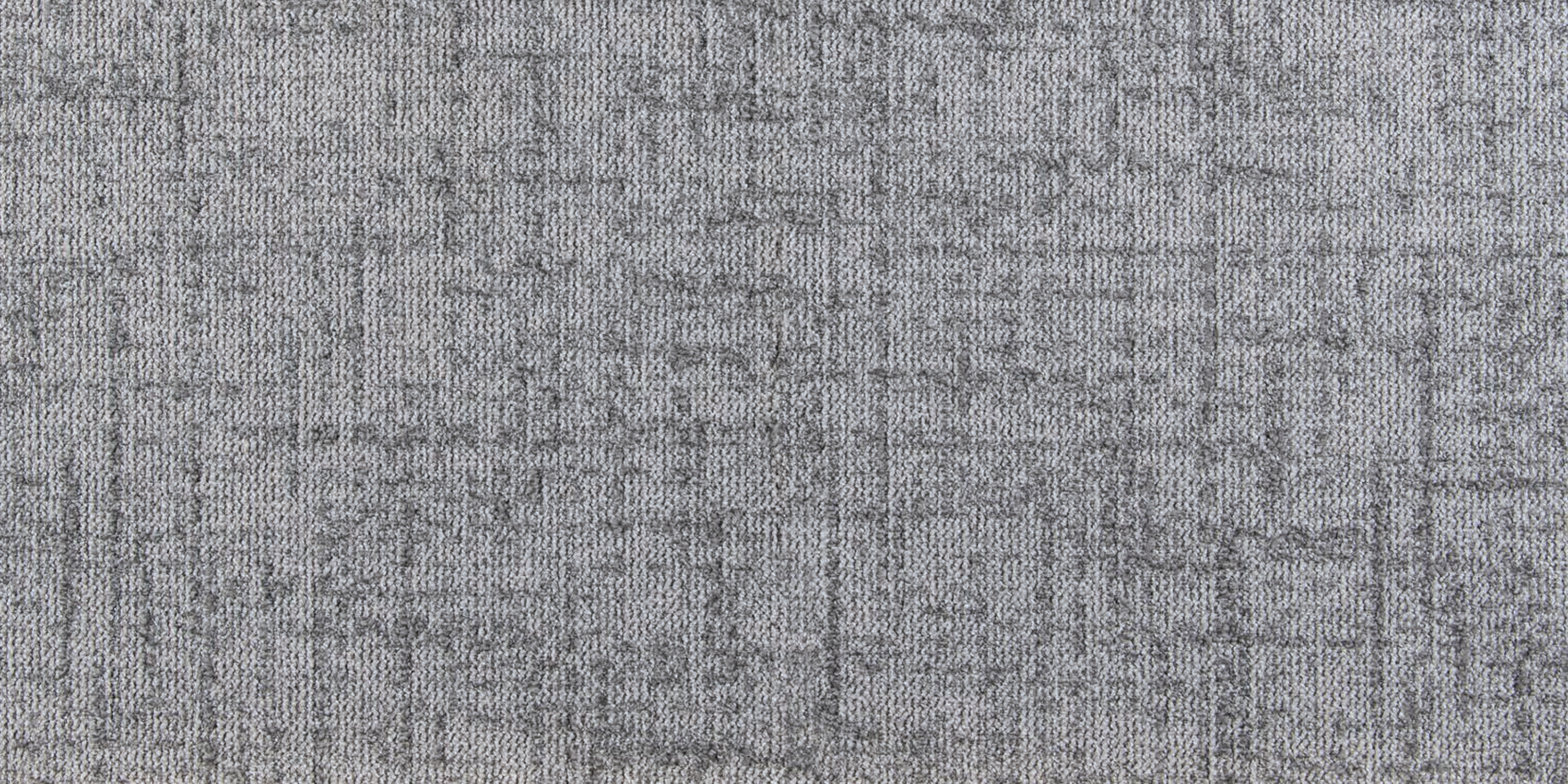
Artisan Tweed

Artisan Tweed has a **minimalistic yet timeless design**. The Tweed pattern is reminiscent of the famous Chanel design. Artisan Tweed is subtle and fits into any modern interior. This collection is a gem in any setting, from an office space to an entrance hall and a hospitality environment.

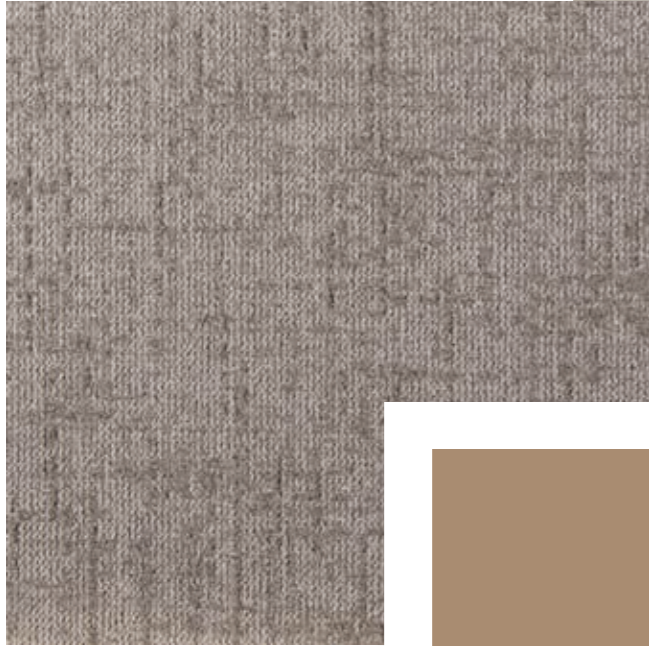
From light beige and grey tones to darker colour options. The choice is yours!

Available in wall-to-wall carpet (4 m) and carpet tiles (50x50 cm). XL tiles (50x100 cm and 100x100 cm) are optional from 200 m².





Serenity



Artisan Tweed 64821



Pantone
17-1220 TSX
Affogato



Artisan Tweed 64830

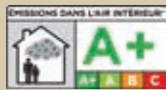




The added value of carpet

Impact sound reduction
26 dB

Sound absorption
0,15



A decent floor covering is a must in every (office) space. **Relax and work in complete silence** thanks to the **sound-absorbing properties**. Enjoy a **pleasant temperature** throughout the seasons thanks to the **insulating effect of carpet**. These assets boost **concentration and productivity**. Comfort is perhaps the greatest benefit. Bringing underfoot **comfort and luxury to the workforce**. Treat yourself and your employees and choose carpet in your office or hospitality area.

The colour in carpet flooring offers other benefits. The right use of colour enhances performance and boosts concentration. At Tapibel, we are fully aware of this. The 12 light colours in the Diamond Art colourbank contribute to a more relaxed and upbeat environment.





Thanks to our **sustainability** initiatives and **ecofriendly** collections, we are actively working towards a circular economy. **Together we make our carpets and the planet greener!**

Inspired by our **ECONYL®** Designs? Contact Tapibel to discuss the possibilities or to place an order! Do you have a question about our collections or sustainability initiatives? Then you can of course contact us for more information.



www.tapibel.be - sales@tapibel.be

Tapibel

Industrielaan 4 - Nolimpark 1319

B-3900 Pelt - Belgium

Tel : +32 11 80 48 50

